

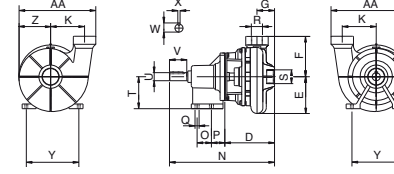
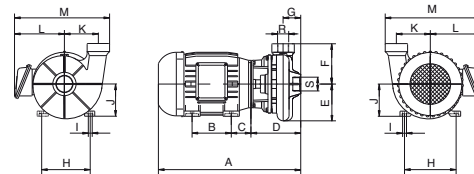


**BC-23**

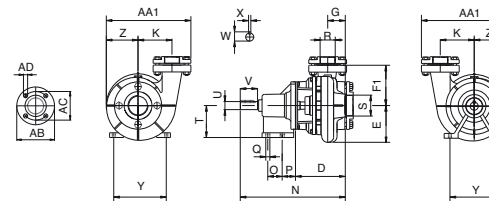
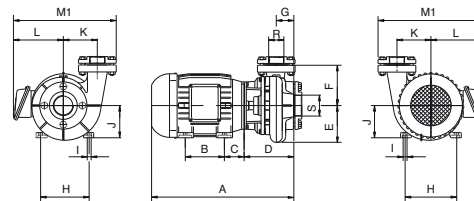
**MOTOBOMBA**

**MANCALIZADA**

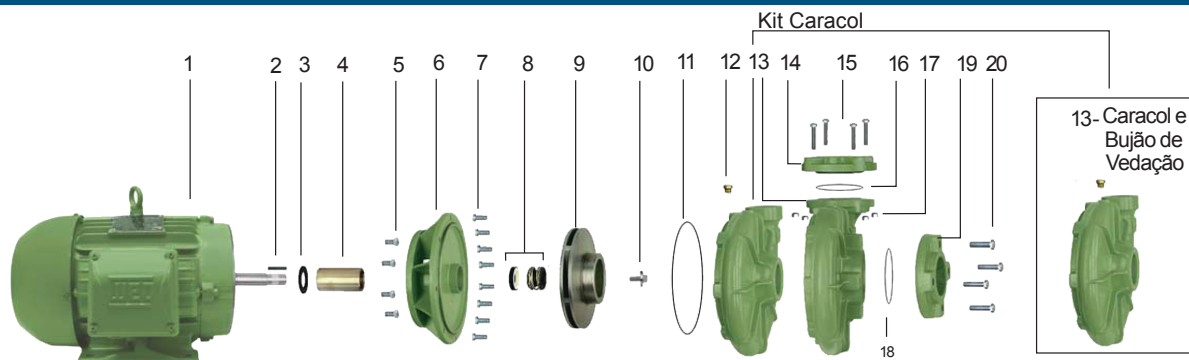
**BOCAIS ROSCADOS**



**BOCAIS FLANGEADOS**



**BC-23**



Item	Descrição	Aplic.	Comp. do Kit	Quant. de peças no produto	Quant. de peças contidas em cada caixa do kit	BC-23 R 1 1/4					BC-23 R 1 1/2				BC-23 R/F 2				
						12,5 cv	15 cv	20 cv	25 cv	30 cv	15 cv	20 cv	25 cv	30 cv	15 cv	20 cv	25 cv	30 cv	
1	Motor IP-55, 2 polos, 60 Hz	R/F	-	1	-	12,5 cv	15 cv	20 cv	25 cv	30 cv	15 cv	20 cv	25 cv	30 cv	15 cv	20 cv	25 cv	30 cv	
2	Chaveta do rotor	R/F	-	1	-	8720055101A	8720055101A	8720055101A	8720055101A	8720055101A	8720055101A	8720055101A	8720055101A	8720055101A	8720055101A	8720055101A	8720055101A	8720055101A	8720055101A
3	Anel de respingo	R/F	-	1	-	8720014104A	8720014104A	8720014104A	8720014104A	8720014104A	8720014104A	8720014104A	8720014104A	8720014104A	8720014104A	8720014104A	8720014104A	8720014104A	8720014104A
4	Bucha do selo	R/F	-	1	-	8723016101A	8723016101A	8723016101A	8723016101A	8723016101A	8723016101A	8723016101A	8723016101A	8723016101A	8723016101A	8723016101A	8723016101A	8723016101A	8723016101A
*5	Kit paraf. SZ.NC. 1/2" x 1"	R/F	-	4	4	8720130101A	8720130101A	8720130101A	8720130101A	8720130101A	8720130101A	8720130101A	8720130101A	8720130101A	8720130101A	8720130101A	8720130101A	8720130101A	8720130101A
*6	Intermediário	R/F	-	1	-	8701236601A	8701236601A	8701236601A	8701236601A	8701236601A	8701236601A	8701236601A	8701236601A	8701236601A	8701236601A	8701236601A	8701236601A	8701236601A	8701236601A
7	Kit paraf. SZ.NC. 3/8" x 1"	R/F	-	8	4	8720130109A	8720130109A	8720130109A	8720130109A	8720130109A	8720130109A	8720130109A	8720130109A	8720130109A	8720130109A	8720130109A	8720130109A	8720130109A	8720130109A
8	Selo mecânico 1 1/4" T21 BUNA	R/F	-	1	-	8720181101A	8720181101A	8720181101A	8720181101A	8720181101A	8720181101A	8720181101A	8720181101A	8720181101A	8720181101A	8720181101A	8720181101A	8720181101A	8720181101A
9	Rotor	R/F	-	1	-	8701483152A	8701483153A	8701483156A	8701200154A	8701200157A	-	-	-	-	-	-	-	-	-
		R/F	-	1	-	-	-	-	-	-	8701484152A	8701484154A	8701199153A	8701199156A	-	-	-	-	-
		R/F	-	1	-	-	-	-	-	-	-	-	-	-	8701485152A	8701485154A	8701201153A	8701201155A	-
10	Paraf. S.NC. 3/8" x 3/4" Flang.	R/F	-	1	-	8720131101A	8720131101A	8720131101A	8720131101A	8720131101A	8720131101A	8720131101A	8720131101A	8720131101A	8720131101A	8720131101A	8720131101A	8720131101A	8720131101A
11	O-ring 2274	R/F	-	1	-	8720114125A	8720114125A	8720114125A	8720114125A	8720114125A	8720114125A	8720114125A	8720114125A	8720114125A	8720114125A	8720114125A	8720114125A	8720114125A	8720114125A
12	Bujão de vedação 1/4" GAS	R/F	-	1	-	8720037101A	8720037101A	8720037101A	8720037101A	8720037101A	8720037101A	8720037101A	8720037101A	8720037101A	8720037101A	8720037101A	8720037101A	8720037101A	8720037101A
13	Kit caracol BC-23 R 1 1/4	R	Caracol e Bujão ved.	1	1	8700117601A	8700117601A	8700117601A	8700117601A	8700117601A	-	-	-	-	-	-	-	-	-
	Kit caracol BC-23 R 1 1/2	R		1	1	-	-	-	-	-	8700116601A	8700116601A	8700116601A	8700116601A	-	-	-	-	
	Kit caracol BC-23 R 2	R		1	1	-	-	-	-	-	-	-	-	-	8700118601A	8700118601A	8700118601A	8700118601A	
	Kit caracol BC-23 F 2	F		1	1	-	-	-	-	-	-	-	-	-	8730513122A	8730513122A	8730513122A	8730513122A	
14	Flang 2 DIN 1092 1 PNI6	F	-	1	-	-	-	-	-	-	-	-	-	8701466151A	8701466151A	8701466151A	8701466151A	8701466151A	

Item	Descrição	Aplic.	Comp. do Kit	Quant. de peças no produto	Quant. de peças contidas em cada caixa do kit	BC-23 R 11/4					BC-23 R 11/2				BC-23 R/F 2				
15	Kit paraf. S.NC. 5/8" x 3"	F	-	4	4	-	-	-	-	-	-	-	-	-	-	-	-	-	-
16	O-ring 2237	F	-	1	-	-	-	-	-	-	-	-	-	-	-	-	-	-	-
17	Porca NC. 5/8"	F	-	4	-	-	-	-	-	-	-	-	-	-	-	-	-	-	-
18	O-ring 2238	F	-	1	-	-	-	-	-	-	-	-	-	-	-	-	-	-	-
19	Flange 3 DIN 1092 1 PN10	F	-	1	-	-	-	-	-	-	-	-	-	-	-	-	-	-	-
20	Kit paraf. S.NC. 5/8" x 1 3/4"	F	-	4	4	-	-	-	-	-	-	-	-	-	-	-	-	-	-
	Kit mancal MG 100FC149 JM108					8730501107A	8730501107A	8730501107A	8730501107A	8730501107A	8730501107A	8730501107A	8730501107A	8730501107A	8730501107A	8730501107A	8730501107A	8730501107A	8730501107A
	<b>Diâmetro do rotor (mm)</b>					<b>197</b>	<b>208</b>	<b>228</b>	<b>245</b>	<b>250</b>	<b>193</b>	<b>209</b>	<b>225</b>	<b>240</b>	<b>177</b>	<b>192</b>	<b>207</b>	<b>225</b>	

\* Para bombas Mancalizadas, substituir item 5 (código 8720130101A) pelo código 8720130111A e item 6 (código 8701236601A) pelo código 8701235601A.

Opções																			
8	Selo mec. 11/4" T21 VITON	R/F	-	1	-	8720181107A	8720181107A	8720181107A	8720181107A	8720181107A	8720181107A	8720181107A	8720181107A	8720181107A	8720181107A	8720181107A	8720181107A	8720181107A	8720181107A
	Selo mec. 11/4" T21 EPDM	R/F	-	1	-	8720181106A	8720181106A	8720181106A	8720181106A	8720181106A	8720181106A	8720181106A	8720181106A	8720181106A	8720181106A	8720181106A	8720181106A	8720181106A	8720181106A
	Selo mec. 11/4" T21 SIC-EPDM	R/F	-	1	-	8720181103A	8720181103A	8720181103A	8720181103A	8720181103A	8720181103A	8720181103A	8720181103A	8720181103A	8720181103A	8720181103A	8720181103A	8720181103A	8720181103A
	Selo mec. 11/4" T21 SIC-VITON	R/F	-	1	-	8720181105A	8720181105A	8720181105A	8720181105A	8720181105A	8720181105A	8720181105A	8720181105A	8720181105A	8720181105A	8720181105A	8720181105A	8720181105A	8720181105A