

VITE / PUMP 2

403 01.16

**S** Bomba  
Shopping



# SEA

**SANIVITE®**

**SANIPUMP2®**

**FR** NOTICE D'INSTALLATION

**UK** INSTALLATION INSTRUCTIONS

**DE** INSTALLATIONSHINWEISE

**IT** ISTRUZIONI PER L'INSTALLAZIONE

**ES** MANUAL DE INSTALACIÓN

**BR** **PT** MANUAL DE INSTALAÇÃO

**NL** INSTALLATIE VOORSCHRIFTEN

**SE** INSTALLATIONSANVISNING

**DK** INSTALLATIONSVEJLEDNING

**NO** INSTALLASJONSANVISNING

**FI** ASENNUSOHJEET

**HU** FELSZERELÉSI ÉS KEZELÉSI ÚTMUTATÓ

**PL** INSTRUKCJA INSTALACJI

**RU** ИНСТРУКЦИЯ ПО МОНТАЖУ И ЭКСПЛУАТАЦИИ

**RO** MANUAL DE INSTALARE

**CZ** NÁVOD K INSTALACI A POUŽÍVÁNÍ

**TR** KURULUM KILAVUZU

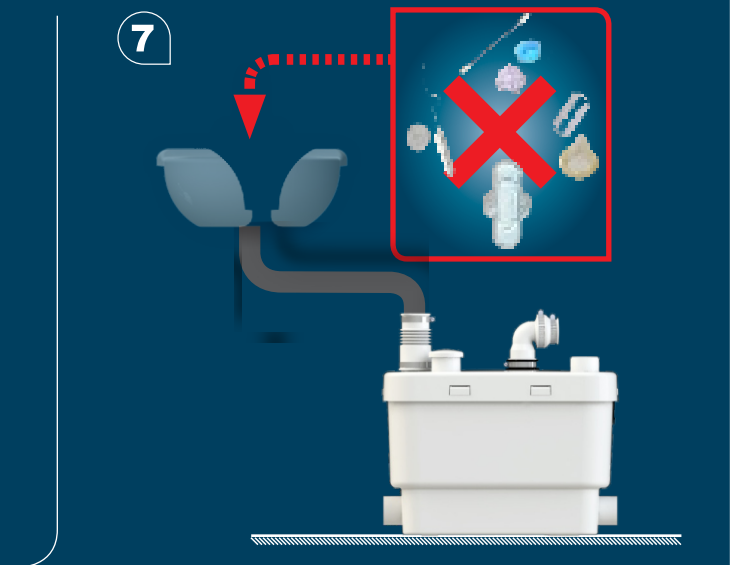
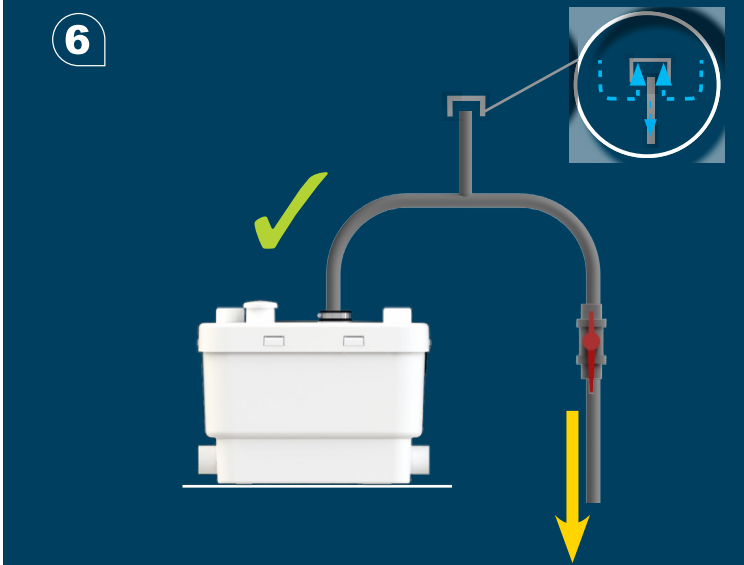
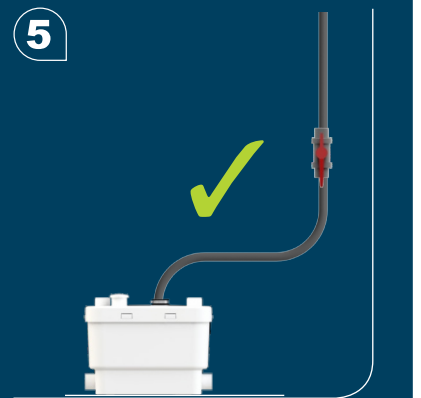
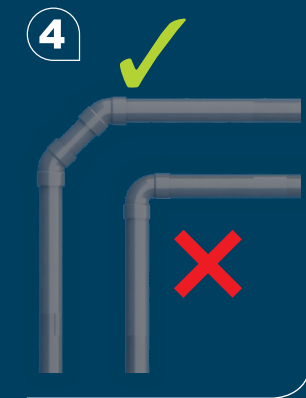
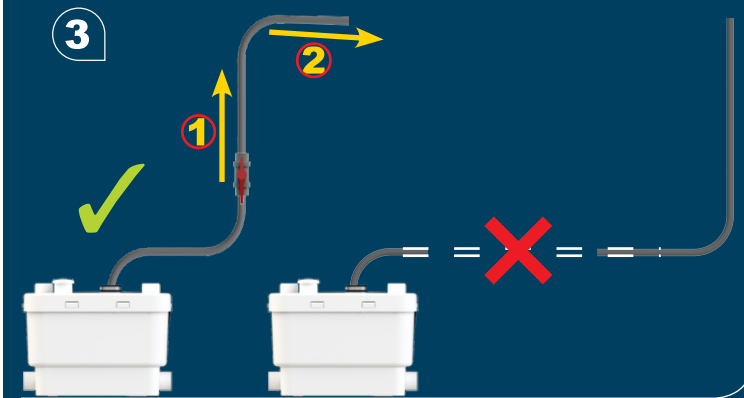
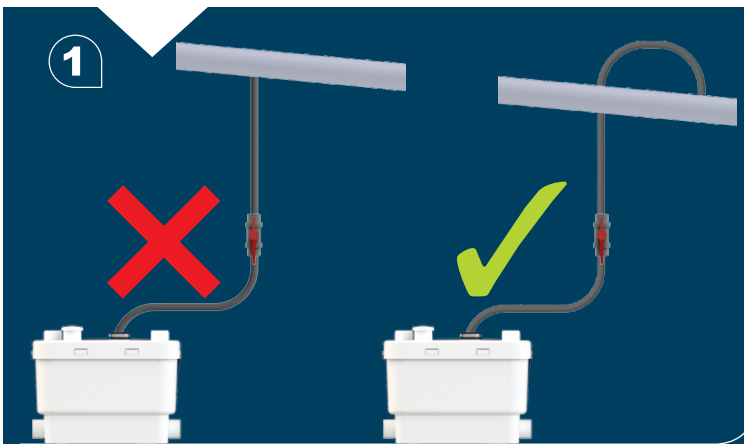
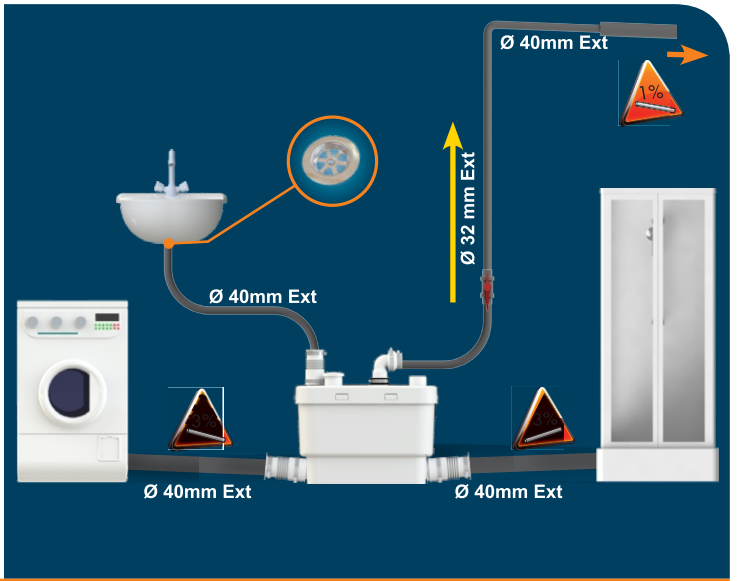
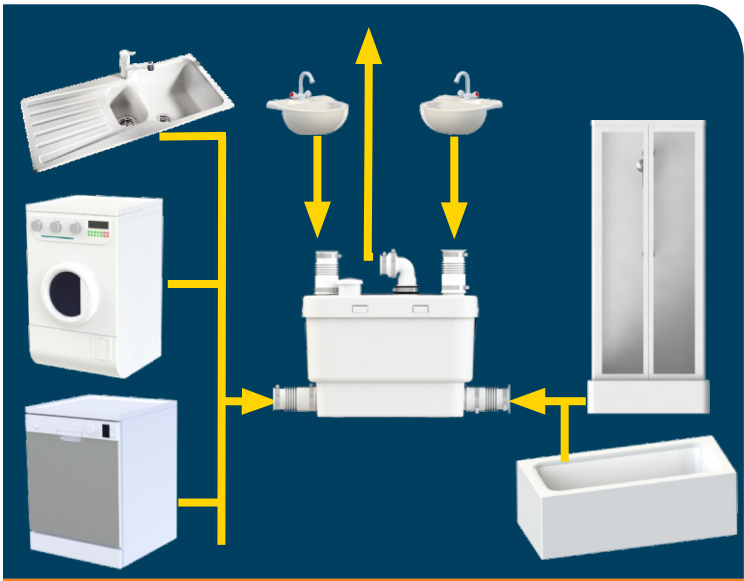
**CN** 用户应保留安装指南以备用

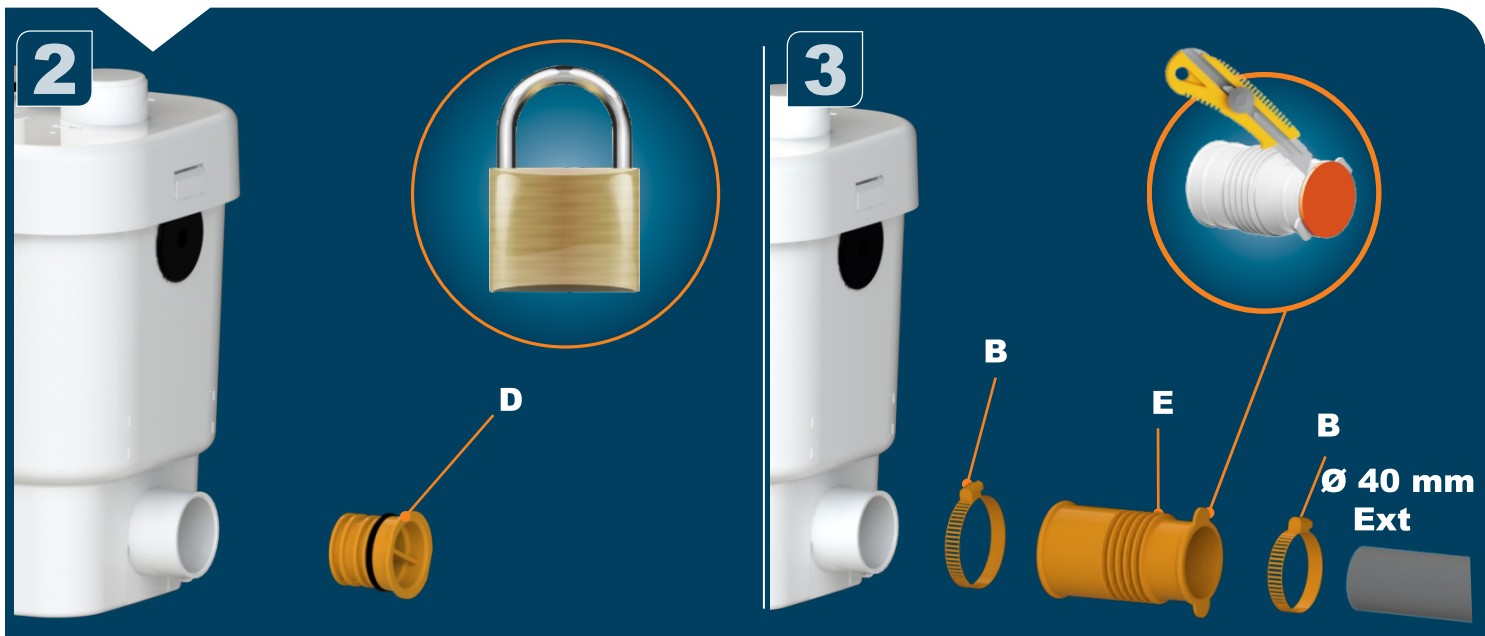
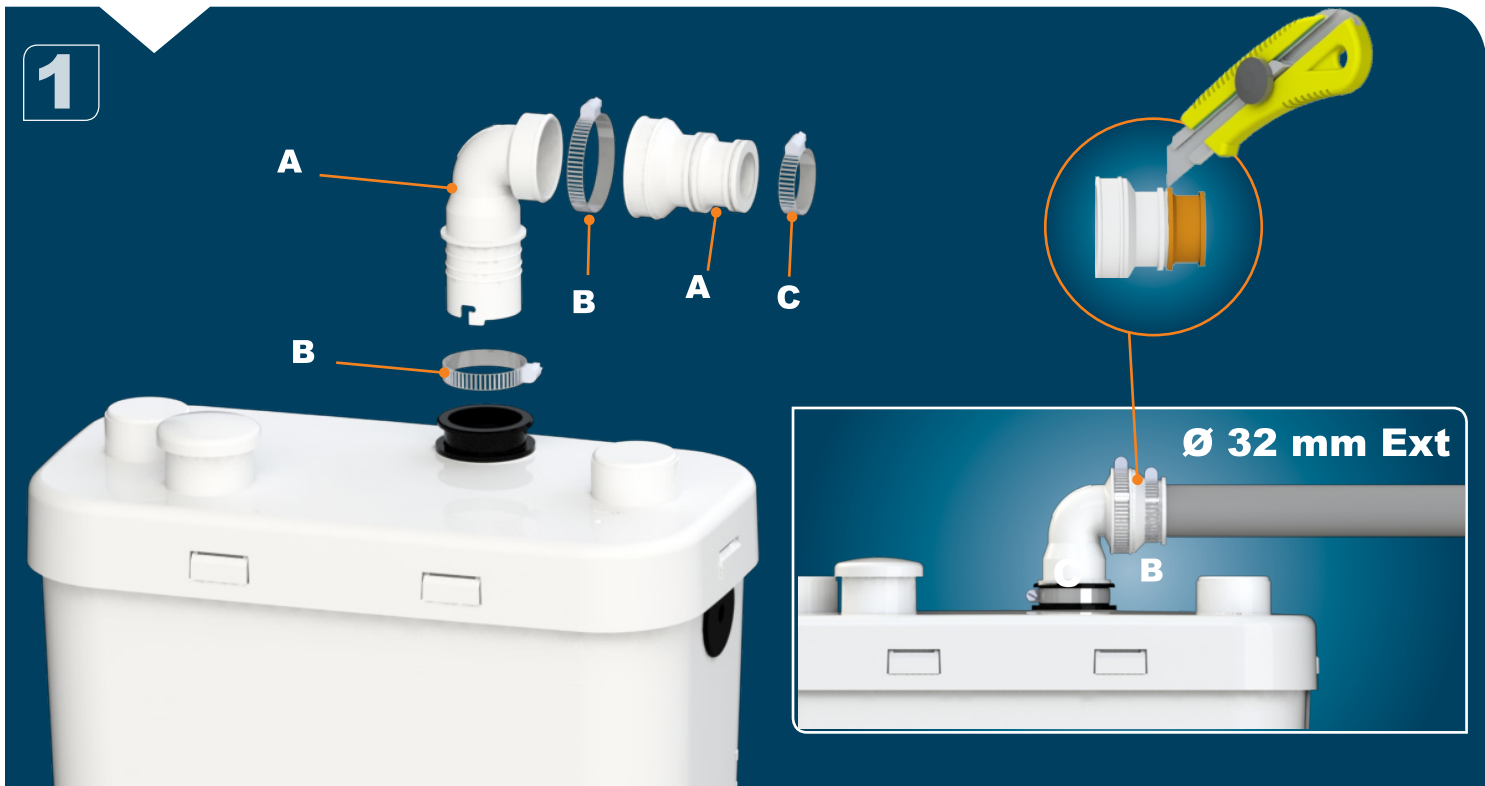
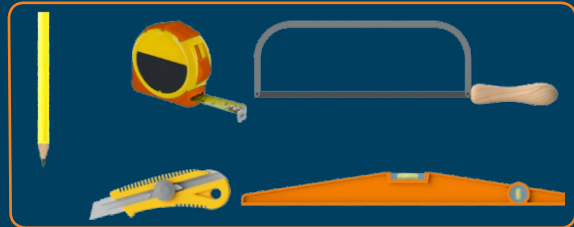
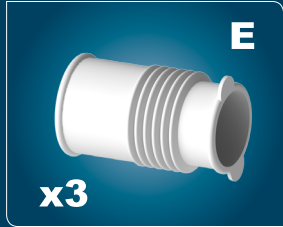
**KR** 설치내용서

**HR** UPUTA ZA INSTALACIJU

**AR** بيكرتلا قرط

CE

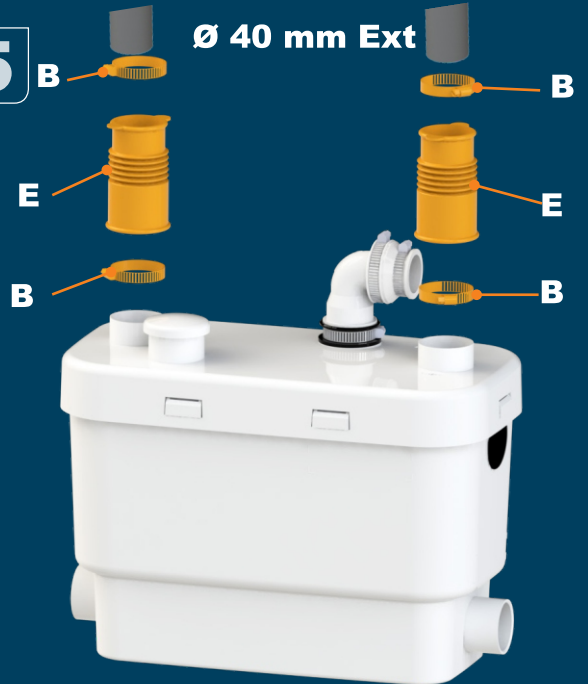




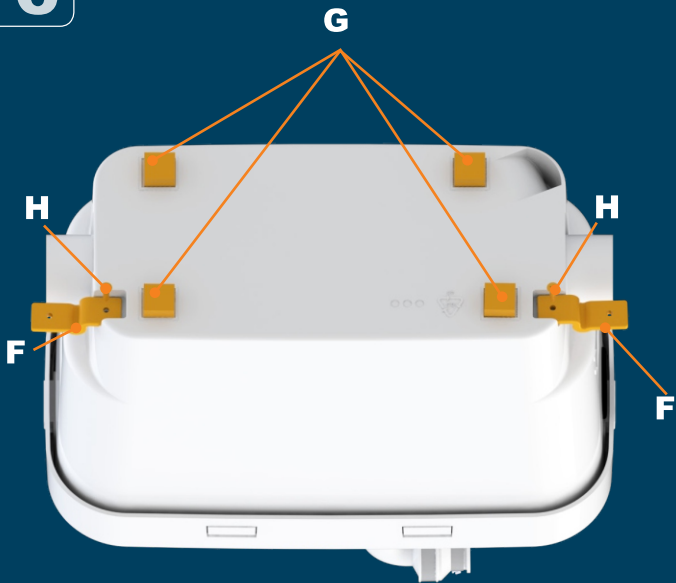
4



5



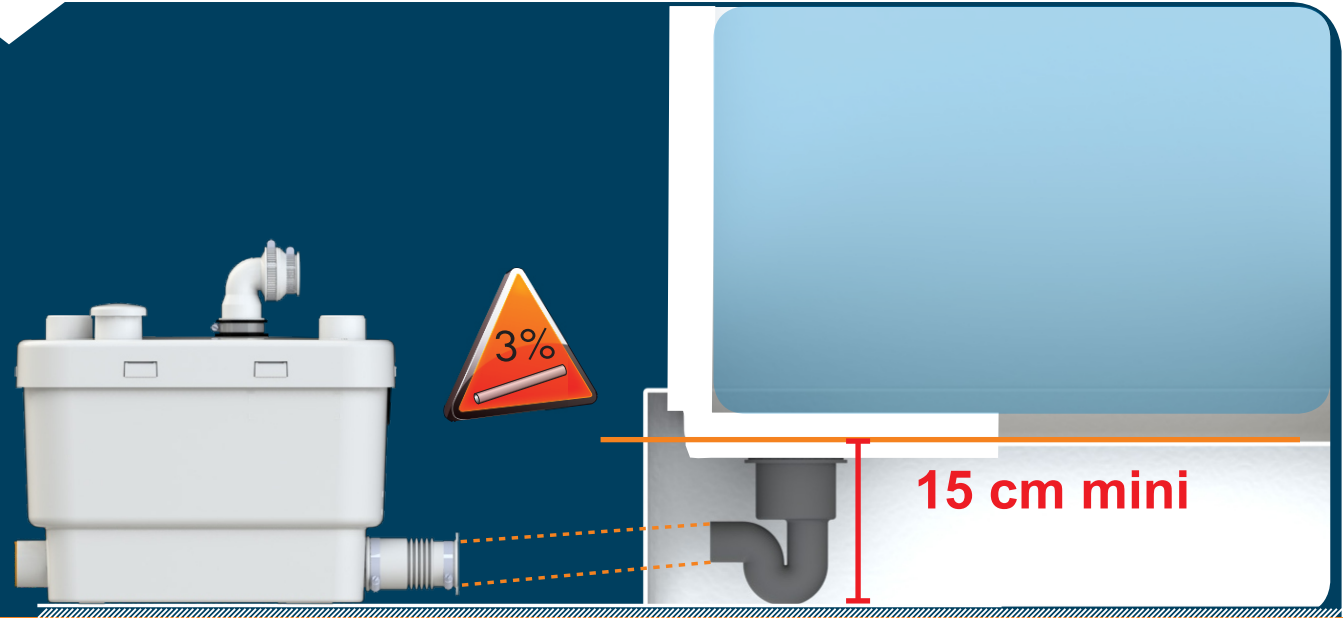
6

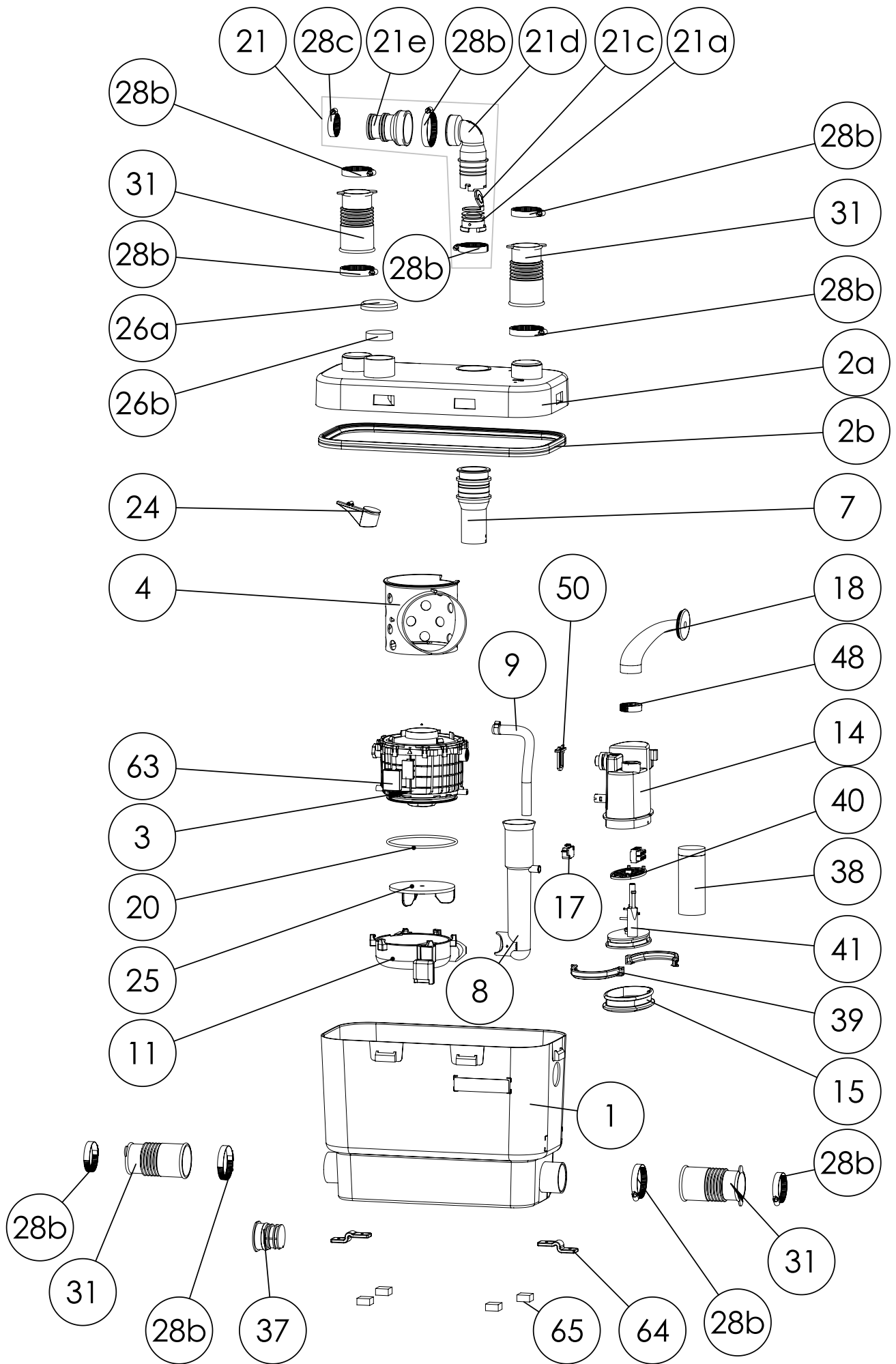


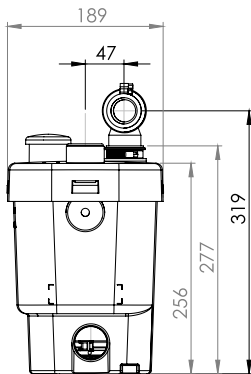
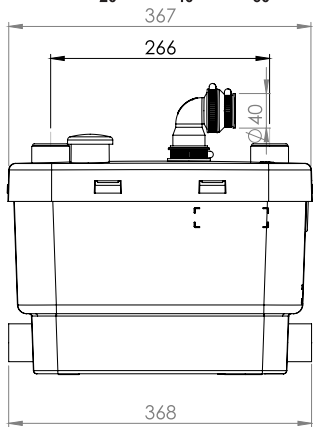
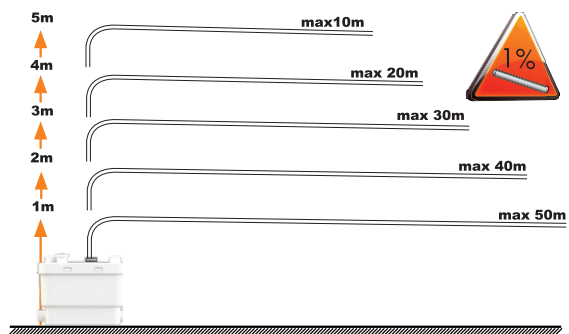
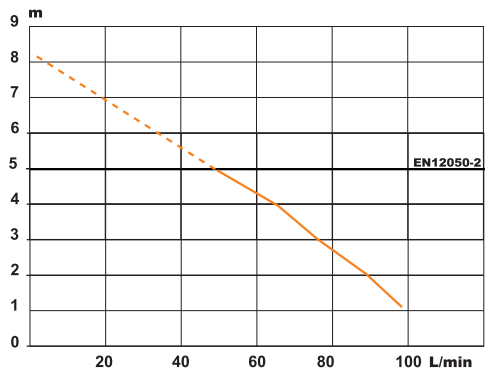
7



8







## SANIVITE/SANIPUMP 2

**EN 12050-2**  
**MAX 60 °C (5 min)**  
**V35**  
**220-240 V - 50/60 Hz**  
**400 W - IP44 - 1,7 A -  $\frac{1}{2}$**   
**6,4 KG**